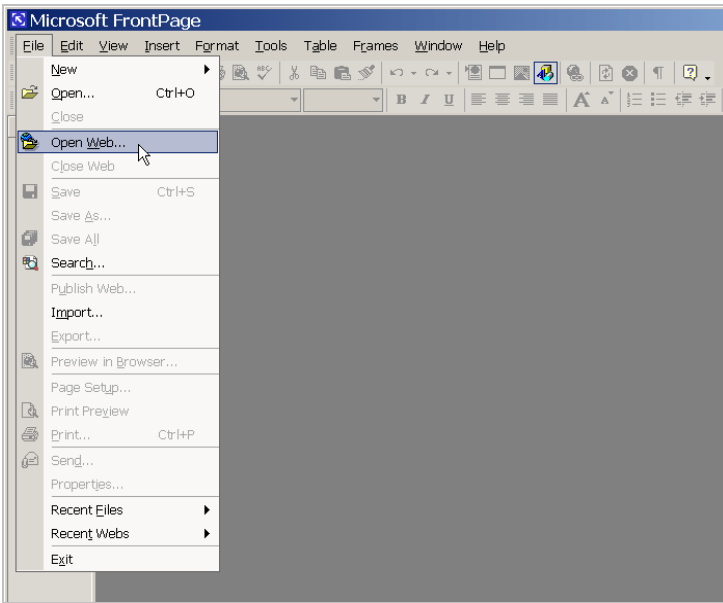


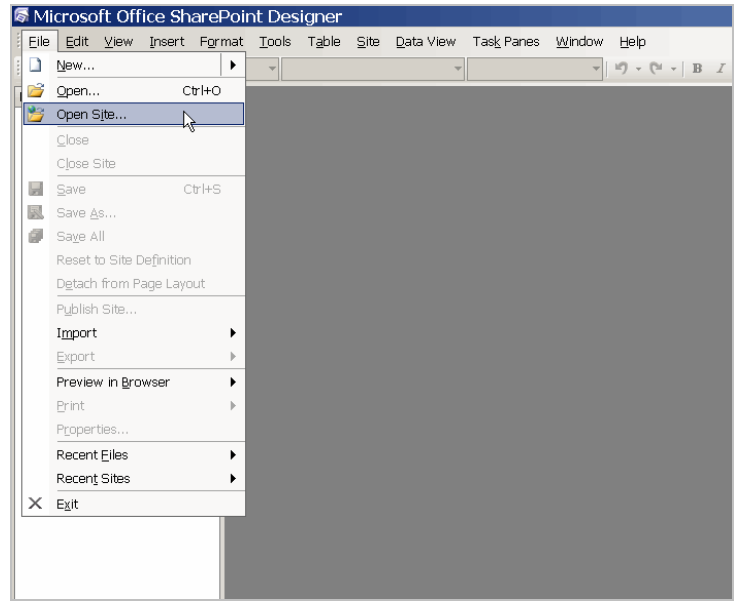
FrontPage XP/2003

File | Open Web

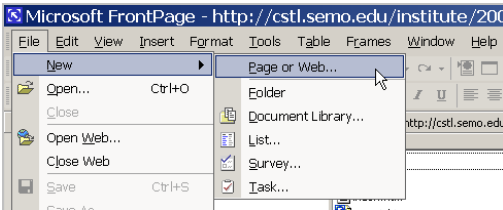


SharePoint Designer 2007

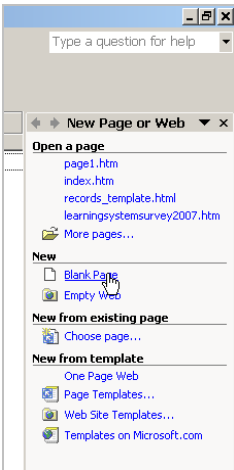
File | Open Site



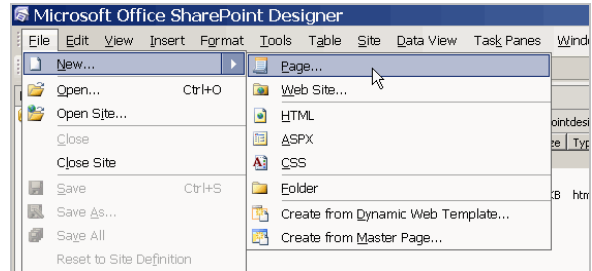
File | New | Page or Web



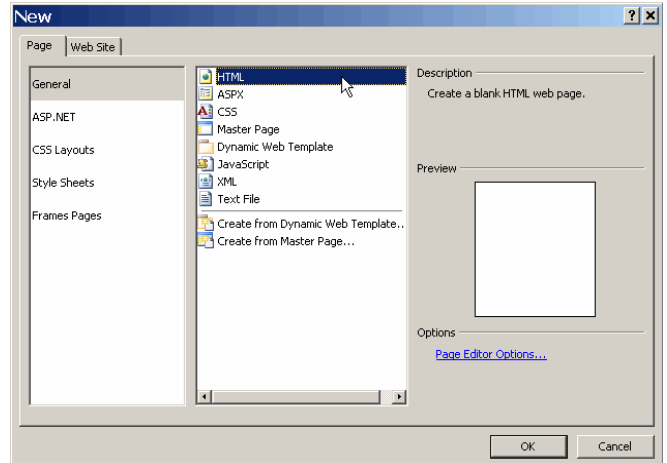
Then...



File | New | Page or File | New | Web Site

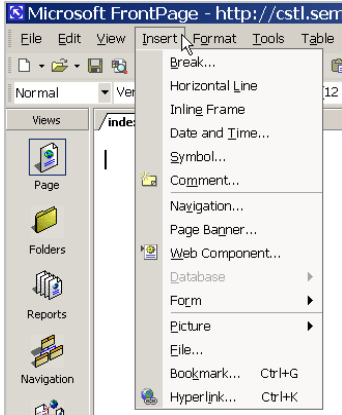


Then...



FrontPage XP/2003

The Insert Menu in FrontPage



Insert | Break

Insert | Horizontal Line

Insert | Date and Time

Insert | Symbol

Insert | File

Insert | Bookmark

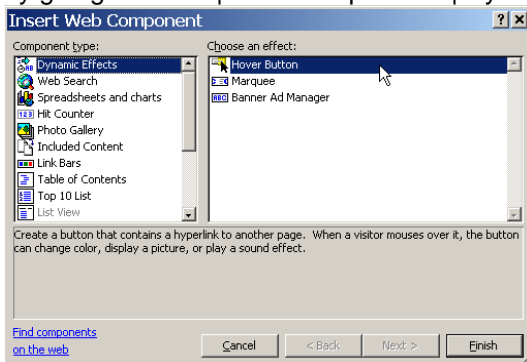
Insert | Form

Insert | Web Component | Expedia Components

Insert | Comment

Inserting Hover Buttons and Banners in FrontPage

In FrontPage, users could insert hover buttons and banners by going to Insert | Web Components | Dynamic Effects:



[Find components on the web](#)

Cancel

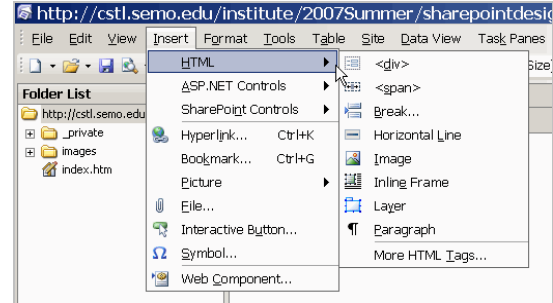
< Back

Next >

Finish

SharePoint Designer 2007

The Insert Menu in SharePoint Designer



Insert | HTML | Break

Insert | HTML | Horizontal Line

Insert | Web Component | Included Content | Date and Time

Insert | Symbol

Insert | File

Insert | Bookmark

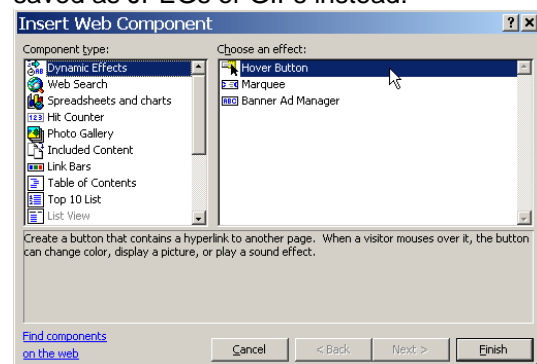
See the next section on "Working with Forms"

Insert | Web Component | MSN Mapping Components

Insert | Web Component | Included Content | Comment

Inserting Hover Buttons and Banners in SharePoint Designer

In SharePoint, Java applets are blocked in SharePoint. That means that hover buttons and applets such as the Banner Ad Manager no longer run in SharePoint. There is a replacement for a hover button called Interactive Button instead, and it will help the user create buttons that will be saved as JPEGs or GIFs instead:



[Find components on the web](#)

Cancel

< Back

Next >

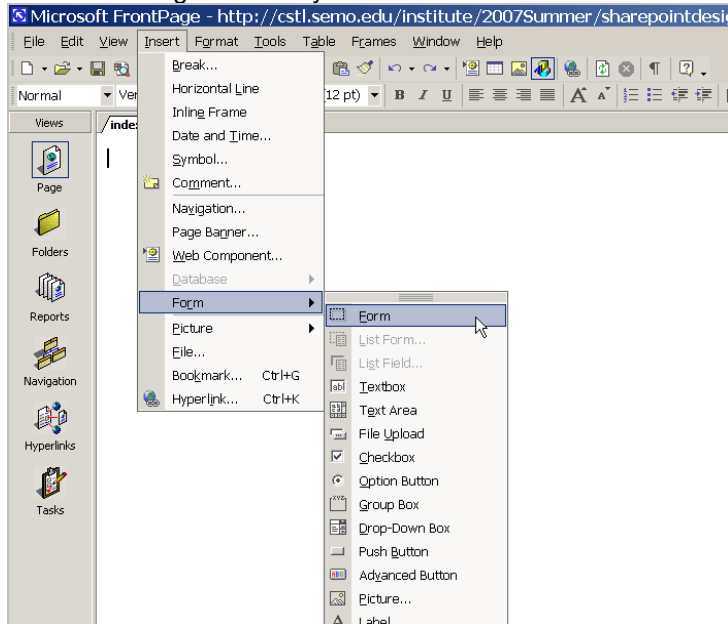
Finish

You can also insert an Interactive Button by choosing Insert | Interactive Button.

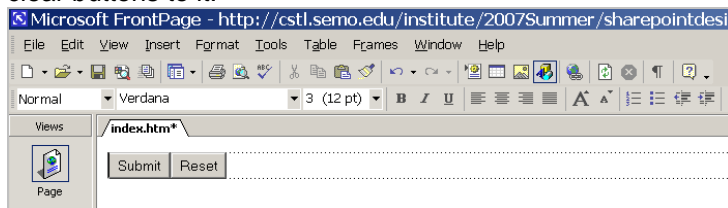
FrontPage XP/2003

Working with Forms in FrontPage

FrontPage has a convenient Insert | Form menu item that makes creating forms easy:

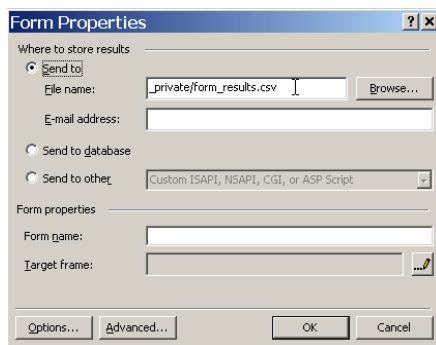


FrontPage automatically creates a form and adds submit and clear buttons to it:



The "Form Properties" in both FrontPage and SharePoint Designer can be accessed by right-clicking the form, then choosing "Form Properties" from the popup menu. By and large, the dialog screens are the same for both.

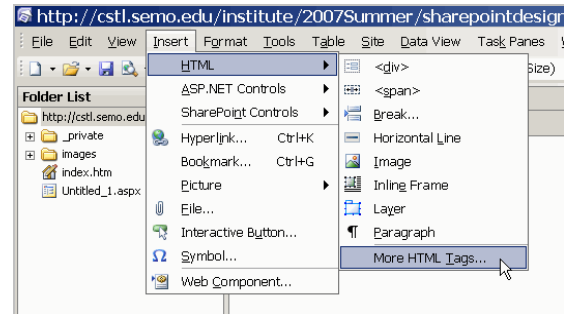
By default, new forms in FrontPage will be configured to save to a file in the "_private" folder of your web.



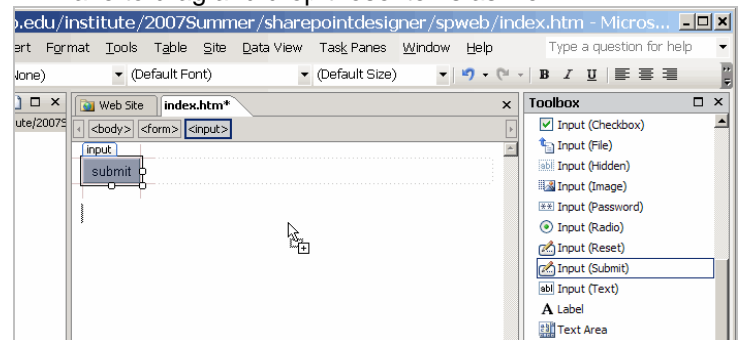
SharePoint Designer 2007

Working with Forms in SharePoint Designer

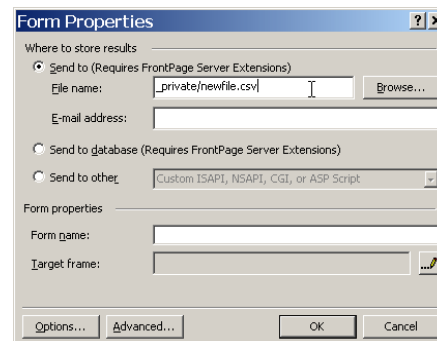
SharePoint Designer has all form components on the right pane's HTML Toolbox so you can drag and drop each into the page. Click on Insert | HTML | More HTML Tags to see the HTML Toolbox:



SharePoint Designer does not add a form automatically until you drag the "Form" item from the HTML Toolbox into the page. It won't add submit and clear buttons either, so you will have to drag and drop those items as well:



New forms in SharePoint Designer default to "Send to other..." instead. Users will need to type the filename where the results will be stored. SharePoint Designer will detect the file type based on the extension you provided (CSV: comma-delimited; TXT: plain text; HTML: regular HTML file; etc):



FrontPage XP/2003

In FrontPage, changing the font properties (by going to Format | Font) will result in HTML code being added for each instance of the changed text:

The Banner Ad Manager component is a Java applet that displays the pictures in which the pictures are displayed, the time interval between the

The Banner Ad Manager is not a default FrontPage 2003 menu option.

Notes

Because the **Banner Ad Manager** is a Java applet, it may not render in Preview view. For Web site visitors to view the banner properly, their computers must have Java Virtual Machine or another Java-enabling program installed. If their computers do not support Java, the banner will not render in the browser window. For more information, see [SharePoint Team Services from Microsoft and Microsoft Windows SharePoint Services](#).

```
<body>
<p>The Banner Ad Manager component is a Java applet that displays the pictures in which the pictures are displayed, the time interval between the
<br>
The Banner Ad Manager is not a default FrontPage 2003 menu option.
<br>
Notes
Because the Banner Ad Manager is a Java applet, it may not render in Preview view. For Web site visitors to view the banner properly, their computers must have Java Virtual Machine or another Java-enabling program installed. If their computers do not support Java, the banner will not render in the browser window. For more information, see SharePoint Team Services from Microsoft and Microsoft Windows SharePoint Services.
</body></html>
```

SharePoint Designer 2007

In SharePoint Designer, changing font properties will result in a new style that can be reused. The HTML code is a lot cleaner and more manageable:

The Banner Ad Manager is not a default FrontPage 2003 menu option.

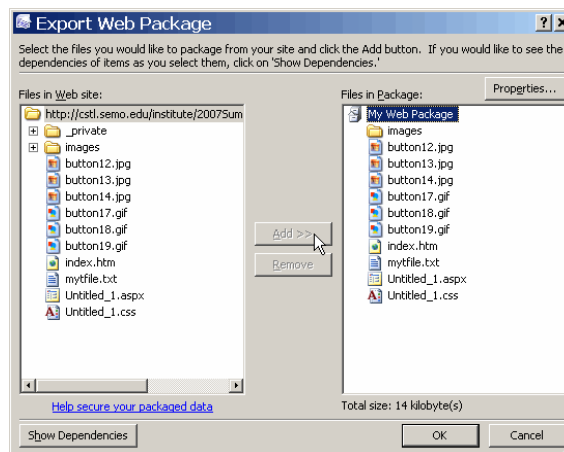
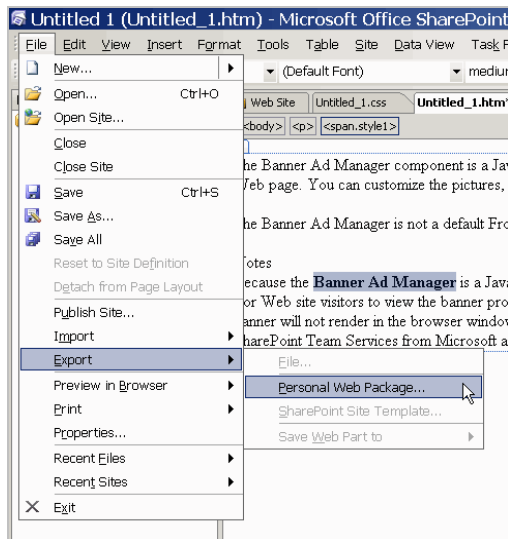
Notes

Because the **Banner Ad Manager** is a Java applet, it may not render in Preview view. For Web site visitors to view the banner properly, their computers must have Java Virtual Machine or another Java-enabling program installed. If their computers do not support Java, the banner will not render in the browser window. For more information, see [SharePoint Team Services from Microsoft and Microsoft Windows SharePoint Services](#).

```
22 <br />
23 The Banner Ad Manager is not a default FrontPage 2003 menu option. To
24 Banner Ad Manager component, see Add the Banner Ad Manager to the Ins
25 <br />
26 Notes<br />
27 Because the Banner Ad Manager is a Java applet, it may not
28 may not render in Preview view.<br />
29 For Web site visitors to view the banner properly, their computers must
30 Java Virtual Machine or another Java-enabling program installed. If t
31 computers do not support Java, the banner will not render in the brow
32 SharePoint Team Services from Microsoft and Microsoft Windows SharePo
33 Services block Java applet files, so the Banner Ad Manager will not r
34 SharePoint site.</p>
```

Backing Up a Web Site with SharePoint Designer

An entire web site can be exported to a file in SharePoint Designer. Go to File | Export and “add” items from your web site to the “package” (file) you’re creating.



You can import a Personal Web Package anytime.

NOTE: Do not attempt to import OIS data back into your web. This could damage the links and databases used by OIS.